

WEST LoTHIAN CHILD PROTECTION COMMITTEE



Annual Report 2024 – 2025

Improvement Plan 2025 – 2027



CONTENTS

FOREWORD	3
CONTEXT	4
ACCOUNTABILITY	5
CHILD PROTECTION COMMITTEE	6
Objectives:	6
Key functions:	6
CHILD PROTECTION ACTIVITY 2024 - 2025.	7
1. LEADERSHIP AND VISION	7
Voice of the Child/Children's rights	7
Lived experience	8
Bairns' Hoose	8
Contextual Safeguarding	8
Strategic Planning and Connections	12
2. LEARNING CULTURE	12
Learning from Case Reviews	13
3. CHILD PROTECTION PROCEDURES & GUIDANCE	14
4. QUALITY ASSURANCE	15
CHILD PROTECTION DATA	16
National Child Protection data 1 st August 2023 – 31 st July 2024 – Highlights	16
Local Child Protection Data	17
CONCLUSION	17
IMPROVEMENT PLAN 2025 – 2027	18
Glossary	20



FOREWORD

On behalf of West Lothian Child Protection Committee (CPC), I am pleased to present the annual report for 2024/25 and the improvement plan for 2025/27. This report covers the work of the CPC from 1st August 2024– 31st July 2025.

The CPC plays a central role in shaping, delivering, and enhancing child protection strategies across agencies and within the local community. This annual report is organised around the CPC's core functions. Through these functions, the CPC works collaboratively to identify and manage risks to children and young people, monitor and improve performance, and champion the ethos that "It's everyone's job to make sure I'm alright."

Over the past two years, CPC members have been committed to embedding learning from case reviews into practice. We have fostered a culture of learning that provides support and development opportunities for those involved in the demanding work of protecting children. Ensuring that the voice of the child is heard in every interaction with families remains a guiding principle. We recognise that culture change is an ongoing process that demands sustained effort and dedication.

The CPC meets quarterly and continues to be supported by oversight from the Chief Officers' Group (COG). Membership has evolved over the past year, bringing new insights and perspectives. CPC members also contribute to other key strategic planning groups, ensuring that child safety remains a shared and consistent priority. Regular engagement between the Lead Officer and I with CPC Chairs and Lead Officers across Scotland supports the incorporation of national best practice to our local context and enables us to share our learning with others.

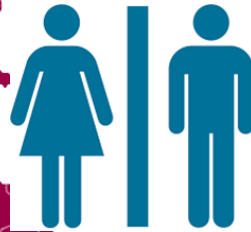
Our work continues to be informed by single and multi-agency quality assurance, the lived experiences of children, and learning from both local and national case reviews. The CPC remains committed to improving outcomes for children in West Lothian who are at risk of significant harm. We aim to ensure staff are equipped with the tools, knowledge, and support needed to build strong, trusting relationships with children and families that lead to lasting positive change.

Stevie Healy
CPC Chair



CONTEXT

Population:
185,600



93,944 | 89,866

**0-18-year olds
38,708**

31.07.24 – 302 Looked After children
31.07.25 – 323 Looked After children

31.07.24 – 62 children on CP register
31.07.25 – 71 children on CP register



**Number of Households
81,645**

West Lothian has 13 priority
regeneration areas and 35
data zones in the most
deprived 20% in Scotland



**34.1% of W. Lothian
babies exclusively
breastfed at 6-8
weeks.
(38.4% NHS Lothian)**

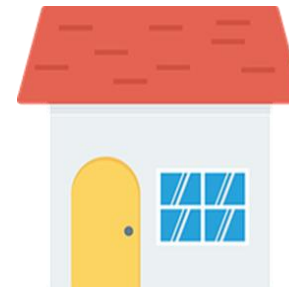


**1719 births registered April
23 - March 24**

**1688 births registered April
24 – March 25**

end child poverty

**estimates 24% of West
Lothian children live in
poverty (2023-24)**



**2024 – 25 Homeless Applicants
Total: 1133**

**26% were single parents
28% were aged 16 – 25
10% cited domestic abuse**

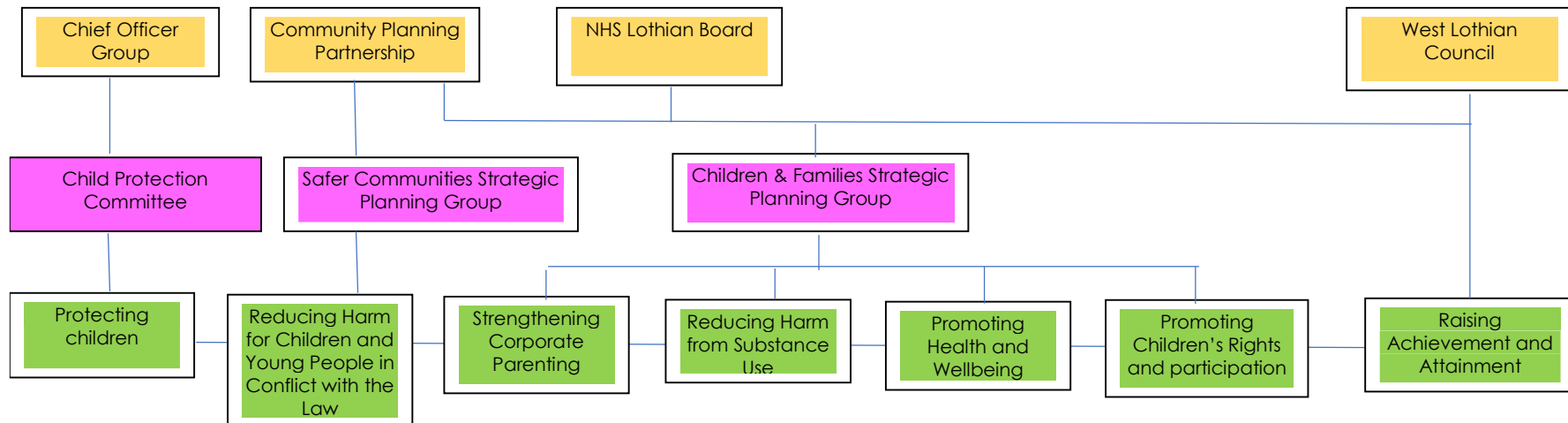
Council housing stock - 14,339

1. <https://totalpopulation.co.uk>



ACCOUNTABILITY

Chief Officers are ultimately responsible and accountable for improving the experience of and outcomes for children who may need protection. The local CPC is the inter-agency mechanism to take forward this work. Chief Officers are individually and collectively responsible and accountable for the effectiveness of the Child Protection Committee (CPC). Members of the CPC and its subcommittees are also members of a variety of other strategic groups ensuring robust strategic planning links.





CHILD PROTECTION COMMITTEE

The Child Protection Committee (CPC) is the key local body for developing, implementing and improving child protection strategy across and between agencies, bodies and the local community. The CPC is expected to jointly identify and manage risk to children and young people, monitor and improve performance and promote the ethos that "It's everyone's job to make sure I'm alright". All children have a right to be safe and protected. All services have a responsibility to ensure children are safe and their needs are met. The Child Protection Committee works in partnership with children, families and the community to achieve this.

Objectives:

We will work together to:

- keep children and young people safe
- provide strong and clear leadership and direction
- ensure staff learning and development
- evaluate performance and ensure continuous improvement
- communicate and engage with children, young people and families

Key functions:

- continuous improvement
- public information, engagement and participation
- strategic planning and connections
- annual reporting on the work of the CPC





CHILD PROTECTION ACTIVITY 2024 - 2025.

1. LEADERSHIP AND VISION

Information about the role of the CPC, the Chief Officers' Group and what has been discussed at CPC meetings is available on the website.

The CPC has strong links with the Children and Families Strategic Planning Group and is involved in work to ensure that GIRFEC guidance is up-to-date, clear, fit for purpose and embedded in practice.

A joint development event for members of the CPC and Adult Protection Committee (APC) focused on leadership and self-evaluation is planned.

Voice of the Child/Children's rights

As part of West Lothian's commitment to embedding best practice in supporting children's rights, a Children's Participation and Engagement Worker (P&E Worker) was introduced to Children's Services on 6th January. This role is designed to place children and young people at the heart of service planning and delivery. The postholder works across wider Children's Services to drive participation efforts and facilitate the Children's Rights Network (CRN). The worker has met with the CPC and it is envisaged that the network will engage with the CPC once it is firmly established.

Unaccompanied asylum-seeking children identified core challenges such as isolation, housing, mental health, financial pressures, English language barriers, and limited connections with the local community. All partners are committed to responding to identified themes and co-developed a summer project alongside the young people.

A young person in one of the residential houses created a PowerPoint presentation to welcome other young people into the home. With P&E Worker IT support, the presentation is being developed further.



Lived experience

The CPC is keen to ensure that the lived experience of children, young people and their families involved in child protection processes is heard and understood in quality assurance work, assessment, planning and improving outcomes for children. The CPC wants to ensure that lived experience is at the centre of planning and development in a meaningful, not tokenistic way and is currently exploring how other CPC's are using the lived experience of service users.

Bairns' Hoose

The Bairns' Hoose project has established links with partners. Children First Rights and Recovery Workers have been working directly with families to provide routine access to seamless pre and post interview support, including through court processes. There has been engagement with children, young people and their families individually and with groups. This has included those involved with West Lothian Bairns' Hoose and a wider group of young people and their families to learn from experiences. Themes include accessible information being available for families in relation to processes so that parents and carers feel equipped to support children and young people. The project is producing this information. The plan for 2025/26 is to build on the collaboration between Children First and the SCIM (Scottish Child Interview Model) team to embed processes and ensure children who will benefit from support receive it as early as required. Alternative interview spaces for children will also be explored. There will be ongoing involvement with children and young people with lived experience of child protection and justice processes in the design and delivery of the Bairns' Hoose approach in West Lothian.

Contextual Safeguarding

Contextual safeguarding is an approach to understanding, and responding to, young people's experiences of significant harm beyond their families. It recognises that the different relationships that young people form in their neighbourhoods, schools and online can feature violence and abuse. Parents and carers have little influence over these contexts and young people's experiences of extra-familial abuse can undermine parent-child relationships.



The Assess and Connect Team (ACT), an early intervention initiative launched on 1 November 2024, supports children and young people aged 10-16 and their families who are at risk of or involved in conflict with the law. This partnership between West Lothian Council and the Youth Action Project aims to address early concerns such as antisocial behaviour and vulnerability to child criminal exploitation by disrupting these patterns and reconnecting families with Universal Services. ACT works collaboratively with education, children's services, the Missing Young Persons Strategic Group, and is part of the council's wider Community Safety Screening Groups. Guided by principles of contextual safeguarding, the team focuses on early identification of child criminal exploitation. They also partner with third-sector initiatives to support the police's Supporting Opportunities for Life (SOL) offering a triage system, with ongoing efforts to strengthen these links.

Since launch, ACT has received approximately 65 referrals, 82% from educational settings. Using the Outcome Youth Star framework, the team monitors progress and outcomes. Young people report an 87% improvement in positive decision-making, reduced conflict with the law, and increased educational engagement, with 75% noting improved health and wellbeing. Additionally, ACT manages the Early and Effective Intervention (EEI) service, supporting children 12-17 who were involved with and were charged by police as well as identifying and providing appropriate supports to any children aged 10-12 who would not be discussed at EEI as they are below the age of criminal responsibility but who may need whole-family interventions. The EEI service continues to perform well, with 95% of young people aged 12-17 not progressing to youth justice referrals within 12 months.

Children and Young People's mental health and wellbeing

The CPC is well aware of the importance of mental well-being in recovery from abuse and neglect and in prevention of young people harming themselves or entering into damaging relationships in the future and potentially impacting on the parenting of future generations of children. A key priority of West Lothian's Children Services Plan is to promote the positive mental and emotional wellbeing of children and young people. To support this outcome, the Mental Health Oversight Group (MHOG) continues to coordinate and oversee the delivery of mental health services across West Lothian. The group ensures integration between services, strong communication, and collaborative working practices. The Lead Officer for Mental Health Development works in collaboration with community planning partners to transform mental health services for young people. This work is aligned to the principles of the Community Mental Health & Wellbeing Supports and Services Framework, driving reflection on existing practices and promoting



culture change in line with the national mental health vision. Cross-cutting workstreams have also strengthened connections to trauma-informed practice and the UNCRC implementation, both of which are now embedded in MHOG's approach.

Young people and their families are receiving support when it's most needed. Listen and Link continues to offer an immediate response helpline for families in distress.

In line with MHOG priorities, promotional material and website content were co-designed by [Health in Mind](#), parents, carers and young people. The result is a new, seamless mental health pathway, launched at the Education Mental Health Conference on 20 September 2024. It has since received strong promotion across networks.

Families and young people have taken an active role in shaping services. Feel Good Friday is hosted monthly by [Listen and Link](#), in collaboration with young people. These sessions bring families together to participate in supportive activities and share experiences around their mental health journeys.

In its second year, the Gold Key Word partnership with Mental Health Innovations, [Shout](#), continues to enhance awareness through a targeted approach.

User Demographics (estimated):

- 78% Female, 16% Male, 6% Non-Binary
- 97% White, 2% Asian or Asian British, 2% Mixed or Multiple Ethnic Groups
- 44% LGB+

Top 5 presenting issues:

- Low mood or sadness
- Self-harm
- Suicidal thoughts
- Relationship difficulties
- Stress or worry



Children affected by domestic abuse

The Domestic Abuse and Sexual Assault Team (DASAT) provides Cedar - a 12-week group work programme for women and children recovering from domestic abuse. Women and children participate in linked activities, aimed at breaking the silence about domestic abuse in families and building long-term resilience through the promotion of emotional literacy and alleviation of self-blame. West Lothian Women's Aid also supports women and children who have experienced domestic abuse.

The Children's Rights Court Contact Officer (CRCCO) service was established in West Lothian Council in 2017. The CRCCO works in partnership with Scottish Courts, Sheriffs, solicitors, corporate parents and most importantly children and their families who are the subject of Child Welfare Hearings in Livingston Sheriff Court. The post was established following the work of the Children and Young People's Commissioner and Scottish Women's Aid - Power Up Power Down. Children and young people are supported in ensuring their views are given to the Sheriff when decisions around their lives are being made at Child Welfare Hearings.

West Lothian has adopted "Safe and Together Model" as an approach to families where domestic abuse is an issue. The approach focuses on keeping the child safe and together with the non-offending parent, partnering with non-offending parent as default position and intervening with the perpetrator to reduce risk and harm to child. Training is provided to Social Work staff and awareness raising to a multi-agency audience.

Public Information, Engagement and Participation

The CPC has a communication strategy and plan. At the point of transition from primary to secondary school parents are given information about child sexual exploitation. Child protection information is available for the public and professionals on the Public Protection website. Social Media and the Public Protection website have been used to promote any national messages/campaigns from Child Protection Committees Scotland or other organisations such as Police Scotland. The website will be linked to the Children's Rights website once this has been developed.



Strategic Planning and Connections

The CPC has robust links with other planning fora in West Lothian. Some review and quality assurance findings have been addressed by the Children and Families Strategic Group e.g. updated GIRFEC guidance has been circulated to the multi-agency workforce. Members of the CPC and its subcommittees are also members of a variety of other strategic groups ensuring strategic planning links and the emphasis on keeping children safe. The CPC responds to national consultations and ensures that practitioners or managers attend national events that are available to all.

The Chair and Lead Officer attend Child Protection Committees Scotland (CPCS) meetings and the Lead Officer is a member of the National Lead Officer Group. A member of the Practice and Training Subcommittee attends the National Learning and Development Group. Local Lead Officers for the Public Protection Committees in West Lothian work together on any cross-cutting issues. Across the Lothian area Child Protection Lead Officers collaborate and update any guidance which covers the whole area.

2. LEARNING CULTURE

The CPC is committed to creating a learning culture where staff have a range of opportunities to learn and improve, there is less reliance on formal training and increased opportunities for staff to feel involved and supported, front line managers are committed to reinforcing improvements and supporting staff and practice change is embedded. Single & multi-agency training continues to be provided. There has been a focus this year on training staff to use the Assessment of Neglect toolkit. Information about research / podcasts / webinars / news reports and externally provided training is circulated weekly. Multi-agency practice reflection sessions have taken place giving staff the opportunity to focus on a single issue and discuss with colleagues from different agencies. A number of these sessions have been recorded and are available on the website, allowing individual practitioners or single agency teams to make use of them and explore the issues. The virtual GIRFEC practitioner forum promotes networking opportunities, the chance to hear from teams/projects/agencies about the work they do and an opportunity to discuss local practice. The forum meets in-person annually.

A survey of multi-agency staff and frontline managers found that multi-agency child protection training is not mandatory for the majority of staff, making it difficult to assess the learning requirements of the multi-agency staff. This and issues raised in a recent Learning Review will be tackled over the next 2 years.



Learning from Case Reviews

In the last year a Learning Review has been completed and a decision taken to review aspects of another case meeting the criteria for a Learning Review in a variety of ways – focus groups, paper audit and meetings with practitioners:

Objective	What are we going to do?	How will we do it?	Timescale	Responsibility	What next?
Professional Challenge	Speak to Practitioners	Single agency Focus Groups considering "professional challenge"	Oct/Nov 2025	QASE	Findings from these activities and their implications for wider practice and any further action required will be reported to and considered by the CPC
Risk assessment, decision making & planning	Consider risk assessment, decision making and planning in relation to a specific case	Review paperwork related to the ICPPM, Core Groups and RCPM in one specific case	Oct/Nov 2025	QASE	
		Reflective conversation with IRD participants involved in 2 IRDs where no CP action was taken	Oct/Nov 2025	Lead Officer	
		Reflective conversation with IRD Review Group participants involved in reviewing 2 IRDs where no CP action was taken	Oct/Nov 2025	Lead Officer	
MARAC process	Ensure MARAC process is fit for purpose, is understood and links with CP & ASP processes	MARAC steering group will review process with particular reference to issues raised by CPC	Oct/Nov 2025	MARAC Steering Group	

All actions from Learning reviews and audit activity are incorporated into the CPC's Improvement Plan. Some of the findings result in culture change which takes time and reinforcement on an ongoing basis to embed into practice.

Learning from a recent review will be disseminated at a multi-agency event.

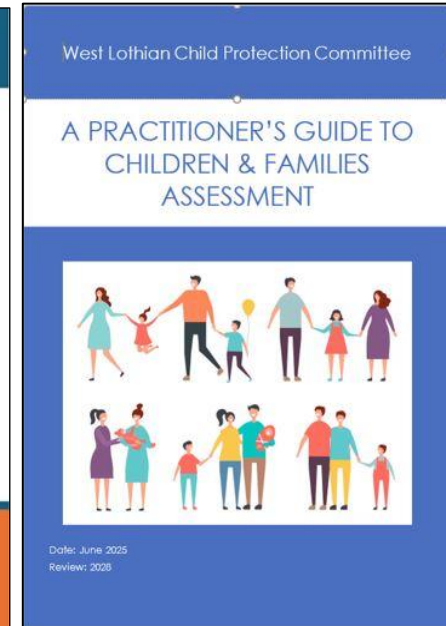
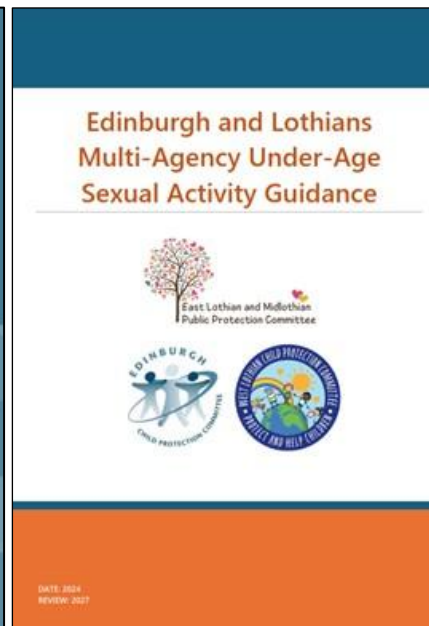
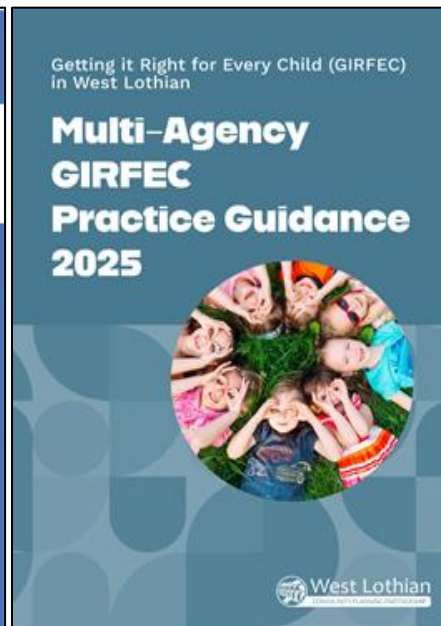
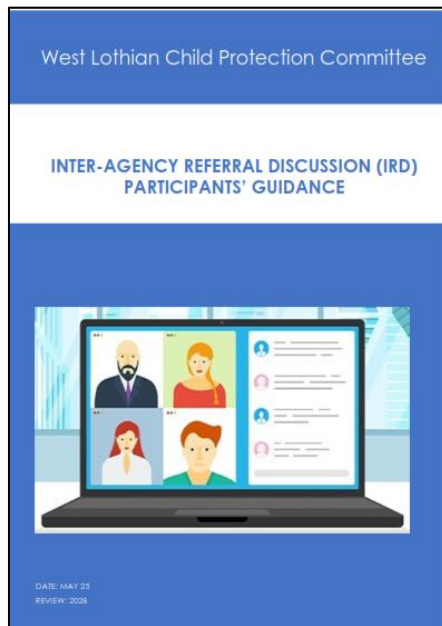
The CPC considers findings and actions from published review reports from other CPCs and Care Inspectorate Summary Reports, and the implications for local practice.



3. CHILD PROTECTION PROCEDURES & GUIDANCE

Guidance has been updated or produced, circulated to staff and published on the website.

- Edinburgh and Lothians Multi-agency Under-Age Sexual Activity Guidance
- Inter-agency Referral Discussion (IRD) Participant's Guidance
- A Practitioner's Guide to Children & Families Assessment
- Practice Reflection sessions are being recorded and uploaded to the Public Protection website for use in team meetings or by individual practitioners
- GIRFEC guidance has been updated and circulated with briefing sessions to follow





4. QUALITY ASSURANCE

The Child Protection Quality Assurance and Self-Evaluation (QASE) Subcommittee is responsible for audit and evaluation of child protection work using the CPC's Quality Assurance Framework. The Management Information Group (MIG) analyses child protection data on a quarterly basis.

In the last 12 months QASE has audited the quality of IRDs and work is continuing to improve the way IRDs are conducted and recorded in West Lothian. QASE consulted with staff about how to improve the quality of child protection planning at CPPMs. A number of options were considered and rejected by those teams that responded. The status quo will prevail and QASE will look again at the quality of CP plans over the next 2 years.

As a result of QASE considering use of the CaRM process, an input on CaRM was provided by CYCJ to a multi-agency audience.

QASE has discussed learning from Learning Reviews across Scotland, single agency audit activity and data analysed by the MIG.

The QASE Subcommittee is flexible and responsive, tailoring activity in response to themes identified in single agency audit activity,



feedback from the IRD Review Group, practitioners, children and families, Reviewing Officers; learning from Case Reviews (local and national); trends identified from the analysis of child protection data and; the implementation of new guidance, policy, procedures and best practice.



CHILD PROTECTION DATA

Child Protection data is collated from information provided by Police Scotland, Scottish Children's Reporter Administration (SCRA) and West Lothian Council Social Work Services. Data is recorded using the Child Protection Minimum data set. The Management Information Group (MIG) analyses data quarterly, considering trends, exploring anomalies and reporting to the CPC and COG.

The Scottish Government published the Children's Social Work Statistics 2023-24 – Child Protection in March 2025. This covers data on children subject to Child Protection processes in the reporting period 01/08/23 – 31/07/24.

National Child Protection data 1st August 2023 – 31st July 2024 – Highlights

- On 31 July 2024, 2,129 children were on the child protection register, representing a 3% increase on 2023 (2,077) and a 26% decrease on 2014 (2,877).
- During the year, 3,167 children were registered onto the child protection register, representing a 2% decrease on 2022-23 (3,234) and a 31% decrease on 2013-14 (4,622).
- Around half (48%) of children added to the child protection register in 2023-24 lived in one of the 20% most deprived areas in Scotland. This compares to 3% in the 20% least deprived areas in Scotland.
- The most common concerns identified at child protection planning meetings for children registered during the year were domestic abuse (45% of children registered), neglect (42% of children registered), parental substance use (39% of children registered), parental mental ill health (37% of children registered), and emotional abuse (33% of children registered).
- 3,117 children were de-registered from the child protection register in 2023-24. This is a decrease of 2% compared to 2022-23 and a 29% decrease since 2013-14. Of the children being de-registered, around half (48%) had been on the register for less than 6 months.
- During 2023-24, 237 care and risk management meetings were recorded. The concerns noted most often were violence (51% of children), substance use (28% of children), harmful sexual behaviour (27% of children), unauthorised absences (27% of children), and non-violent offences (24% of children).



The most common concerns identified at registration in 2023 - 24 were:	
WEST LOTHIAN	SCOTLAND
Domestic Abuse (62%)	Domestic abuse (45%)
Parental Substance Use (36%)	Neglect (42%)
Emotional Abuse (31%)	Parental substance use (39%)
Parental Mental Ill health (26%)	Parental Mental ill health (37%)
Physical Abuse (26%)	Emotional Abuse (33%)
Neglect (26%)	

Local Child Protection Data

Number of children on the CP register	31.07.24 62	31.07.25 71
No. of IRDs	23/24 576	24/25 340
No of PB/ICPPMs 01.08.24 – 31.07.25	23/24 71	24/25 58

The decision to hold a CPPM is made by IRD participants. A CPPM only takes place without parents present in exceptional circumstances.

IRDs are conducted by Social Work Team Managers, Police Sergeants & NHS Paediatricians or Child Protection Advisers. These practitioners meet twice a year to discuss issues related to IRDs to ensure consistency and best practice. Every IRD is considered by the IRD Review Group which reports to the CPC twice a year. Work is continuing in order to improve the IRD process, recording, risk analysis and decision making.

CONCLUSION

Child Protection work is often complex and challenging and the CPC commends the dedication of the multi-agency workforce. It will continue to ensure that the workforce is supported with learning opportunities, adequate supervision and guidance. The CPC will ensure that the views of children and families continue to be heard and influence future developments. The CPC will continue to learn from local and national reviews and audit activity, develop supportive guidance and processes and embed best practice to improve outcomes for children and promote their safety and wellbeing.



IMPROVEMENT PLAN 2025 – 2027

Objective	What are we going to do?	How will we do it?	Timescale	Responsibility	How will we know?
LEADERSHIP & VISION Leadership is required at all levels to promote a learning culture. Practice change is embedded.	Newsletter after each CPC summarising topics discussed & decisions made	By email and publish on website	Quarterly	Lead Officer CPC members	Staff report having a clear understanding of the role and responsibilities of the CPC. Staff understand West Lothian's vision for protecting children. They are updated regularly about the work of the CPC.
	Reflect on the leadership provided by the CPC.	A joint CPC and APC Leadership event will be arranged	Nov 2025		
	"Meet the CPC" events	Virtual or face to face events focused on a theme or combined with, e.g. feedback from a Learning review	Twice a year		
Learning Culture Staff have a range of opportunities to learn and improve. There is less reliance on formal training and increased opportunities for staff to feel involved and supported. Front line managers are committed to reinforcing improvements and supporting staff. Practice change is embedded.	Training	Multi and single agency training Single agency training/team meetings and discussions, induction / e-learning / supervision. Practitioners taking responsibility for their own learning Practice Reflection sessions Safe and Together training	Opportunities to learn are provided on an ongoing basis	All agencies CPC COG Lead Officer GIRFEC Working Group	Staff report that learning events; opportunities for group supervision and reflection enhance practice; improve working relationships and ensure best practice is embedded. Staff feel supported & equipped to fulfil their role. Quality Assurance activity confirms that practice change leads to better outcomes for children and young people. Working relationships between professionals, children and families are respectful and inclusive. Children and their families have a stake in improving outcomes.
	Multi-agency learning events / practitioner forums / discussions Multi-agency reflection "Are we getting it right for this child?" professionals' meetings	Practitioner forums / discussion groups / learning events offer staff the opportunity to reflect and learn from each other. Core Group Reflection Multi-agency supervision may be requested when the Team Around the Child needs support.			
Quality Assurance There are a range of mechanisms to identify areas of good practice and areas for improvement. Front line practitioners are involved	Multi-agency QA activity with an initial focus on actions from recent Learning Reviews; explore identified themes & trends; suggest practice improvements to the CPC, ensuring the voices of children & families are heard. Single agency quality assurance of reports and practice. IRD Review group identifies themes. IRD participants meet to reflect on best practice.	The activity of the QASE subcommittee is informed by: Single agency identification of themes/issues/good practice; Themes / issues / good practice identified at IRD; CP data; Issues / themes / good practice identified in local and national Learning Reviews Involve multi-agency practitioners in QA activity where appropriate	July 27	Members of QASE CPC All agencies	A strength- based approach to planning, meaningfully involving children and families is developed IRD processes are improved to ensure multi-agency risk assessment & decision making is robust
Participation of Children and Young People	Involve children and young people in a meaningful way in planning and developing services and practice	<ul style="list-style-type: none"> Ensure C & YP's views have been sought and are considered at CP Planning & Child's Planning meetings. Encourage CYP involvement at their planning meetings, Identify & 	Ongoing	CPC members	There is evidence that children's voices are heard at meetings affecting their lives. Feedback from children. Children and YP are involved in developing services.



		<p>break down barriers to ensure attendance is possible.</p> <ul style="list-style-type: none"> • Work with the Children's Participation and Engagement Officer to identify opportunities to work with members of the Children's Rights Network 			
Actions from Learning Review					
Parental Substance Use	<i>The CPC and ADP will work together to meet the challenge of ensuring that frontline workers in both Adults' and Children's Services understand the impact on parenting and the risks to children of substance misuse.</i>	Outcome of initial discussions will be reported to the CPC	Nov 2025	CPC and ADP Committee Chairs	Practitioners' understanding of & responses to parental substance use, misuse & addiction and its impact on children are improved. Plans to protect and support are robust.
GIRFEC	Ensure GIRFEC process is understood by all frontline practitioners and embedded into practice	CFSPG should consider how it will review the impact of GIRFEC guidance and briefings. QASE could assist with any audit/review	Dec 2026	CFSPG	Practitioners' understanding of GIRFEC, the role and responsibilities of Named Person/Lead Professional is improved and children get the right support at the right time.
Support & supervision	All agencies, alongside those who provide support or supervision and those who receive it, should ensure that this is provided regularly, is of good quality and meets the needs of staff	Assurance will be provided to the CPC by each agency	Feb 2026	All agencies	Supervision is reflective and challenging. Staff are supported to deliver the best service possible to children & their families.
Response to domestic abuse	Each agency will consider their staff's understanding of the risks to children & victims where there is a high level of domestic abuse. Agencies should consider whether their own internal information sharing is robust, particularly where there are specialist teams, involved.	CPC will consider whether further action is required to ensure that practitioners understand the need to use CP/ASP procedures when risk is identified.	Feb 2026	All agencies	Practitioners identify risk and use procedures appropriately. Victims/survivors and children are safer. Perpetrators are held to account for their parenting choices.
	To be considered	CPC & GBV Committee consider how Safe & Together training/briefings have improved practitioner response and outcomes for children	Dec 2026	GBV Committee/QASE	Practitioners are confident and competent in recognising risk and responding appropriately where domestic abuse is a concern
Ensure practitioners have access to training and learning opportunities	All agencies will review how information is disseminated to and understood by frontline practitioners and consider which training is essential for staff.	All agencies will report to CPC in February 2026. Further single or multi-agency action may result	Feb 2026	All agencies	The CPC's vision of a Learning Culture is embedded. Learning is valued. Practitioners are confident and competent.



Glossary

ADP	Alcohol and Drug Partnership	Multi-agency partnership of services working to tackle alcohol and drug issues locally.
APC	Adult Protection Committee	Similar remit to the CPC
CARM	Care & Risk Management	Process used to risk manage young people who present a significant risk of harm to others
CFSPG	Children & Families Strategic Planning Group	Multi-agency partnership responsible for integrated children's service planning in West Lothian
Core Group		Responsible for day-to-day implementation, monitoring and review of the Child Protection Plan in partnership with children and their families.
CPM	Child's Planning Meeting	Families & professionals meet to create a support plan to meet a child's needs
CPP	Child Protection Plan	Multi-agency plan focused on addressing the identified risks to the child, both immediate and longer term.
CPPM	Child Protection Planning Meeting	A formal multi-disciplinary meeting to decide whether the child is at risk of significant harm and devise a plan to reduce the risk.
CPR	Child Protection Register	A register, of all children, including unborn children, and children up to the age of 18 years, who are the subject of a multi-agency Child Protection Plan.
GBV	Gender based Violence	A term that is used to describe crimes such as rape, domestic abuse, stalking, and forced marriage that are overwhelmingly, but not exclusively, carried out by men against women.
GIRFEC	Getting It Right for Every Child	A consistent framework and shared language for promoting, supporting, and safeguarding the wellbeing of children and young people.
IRD	Inter-agency Referral Discussion	The start of the formal process of information sharing, assessment, analysis and decision making where one or more of the core agencies assess that there is a risk of significant harm to a child up to the age of 18 years.
LR	Learning Review	A structured process for multi-agency and collective learning from significant events in child protection cases
QASE	Quality Assurance & Self Evaluation Subcommittee	CPC Subcommittee responsible for reviewing practice and promoting improvement